

February
2010



The Angelus

ST. MICHAEL & ALL ANGELS EPISCOPAL CHURCH

Does Great Worship Deserve Great Coffee?

I suppose this is not exactly a top-shelf theological question for everyone, but for some, coffee is the unofficial eighth sacrament. For many including myself, morning meditation would not be the same without a cup of the sacred brew. The perky sound of the coffee maker, the enticing aroma, and the warmth of a mug of delicious Joe is spiritual inspiration for many.

Over the past several years I've been queried by numerous, and I do mean numerous, java aficionados with one pressing question. Is there any reason that we can't have good coffee at St. Michael's? I've assured them that bad church coffee has a long and venerable history and it is part of the minor persecutions we must endure as faithful Christians living in a country where cultivation of the sacred bean is not possible. It is part of the perpetual Lent of St. Michael's, and I'm sure that this suffering has some sort of deep spiritual purpose.

Recently at a gathering of those developing a Welcoming Ministry at St. Michael's we turned our attention to the vicissitudes of Coffee Hour. After much discussion, deep prayer and an amazing sense of spiritual purpose the Welcoming Ministry made a simple but profound statement: **Great Worship deserves Great Coffee.** We see no reason for people to run to Starbucks for a \$3.00 cup of coffee after church and miss out on quality fellowship at St. Michael's.

So with considerable humility and a bit of giddy excitement the emerging Welcoming Ministry of St. Michael's recommends the following spiritual practice. **We recommend that St. Michael's give up bad coffee for Lent in the hope that it will become part of our Easter Joy.** Why? Because we believe that **A Great Faith Community, With Great Worship, deserves Great Coffee.**

Now if you want some of our deeper rationale here it is. One of our main goals as a Welcoming Ministry is to encourage people

Upcoming Dates

Sunday, January 31

10:15am Annual Meeting,
potluck following

February 3

7pm Kirtan Mass

February 5

All Angels Mardi Gras 6pm

Saturday, February 6

Winter Sanctuary Retreat

February 13

Mardi Gras Party, Dance
& Auction, 5-9pm

February 17

Ash Wednesday worship with
imposition on ashes at 7am,
noon & 7pm

Sunday, February 21

New members and Drink
Deeper class begins at 6:30pm,
Potluck at 6pm for whole
community

Wednesday, March 3

Monthly Kirtan Mass 7pm

March 5-7

Vestry Retreat

to linger after worship for conversation. Having good coffee will be a great enticement and help in encouraging this to happen. And here is where you come in. Part of being a truly welcoming faith community is, well, welcoming people at coffee hour especially if you don't know them. We recommend this simple approach, "Hi, I'm (insert your name here) and I don't know you" as a way to introduce yourself and protect against asking the rector's wife if she is new here. I can tell you from personal experience that it is no fun to finally get your courage up to visit a new church only to have no one speak to you and to stand on the fringe of a coffee hour that feels like you are at the junior high dance waiting for someone to ask you to join them on the dance floor. Being an open and welcoming community means being willing to spend time getting to know new folks who have come in search of God and a community.

The Welcoming Ministry in concert with our Hospitality Ministry will ensure that there is Great Coffee available in the Parish Hall each week after every service (and tea for those non-coffee folks). If you want to be a part of making this happen, we would love to have you join our ministry. Feel free to contact me through the church office. We hope that good coffee will contribute to a more deeply welcoming environment in which people can more easily find a spiritual home at St. Michael's. While we know there is no single practice that makes a church a deeply welcoming community, Great Coffee can't hurt. With your help our new Lenten discipline will lead to something new Great Worship + Great People + Great Coffee = Great Community.

In the Hospitality of Christ,
Fr. Christopher+



Ash Wednesday February 17

Ash Wednesday services are designed to focus our attention where it needs to be during the season of Lent, which begins on this day. We remember our mortality; we remember that we are flawed, on a journey towards wholeness. Ashes are imposed in the sign of the cross on our foreheads as the priest says to us “Remember that you are dust, and to dust you shall return.” If this is true, how shall we spend our Lent?

How can we use this holy season to help us have a whole and holy life, while we are still alive? Join us Wednesday, February 17 at 7am, noon or 7pm for our Ash Wednesday services, and the imposition of ashes. ☞

New Sunday Night Programs for Spring

Something New for the New Members Class!

You (*yes, ALL of you!*) are cordially invited and encouraged to attend **the St. Michael and All Angels New Members Class for the Spring of 2010.**

Check out our NEW SUNDAY EVENING schedule! The New Members Class for SPRING 2010 at St. Michael and All Angels Episcopal Church will begin on SUNDAY, February 21 following the 5:00 p.m. service. We will celebrate our new beginning with a potluck at 6:00 p.m., followed by Orientation from 6:30 – 8:00 p.m. Classes will continue on SUNDAY evenings from 6:30-8:00 p.m. in the Parish Hall, from February 28 through May 16. We will conclude the sessions with an optional Retreat on Saturday, May 15 with Fr. Christopher and a special Confirmation service with Bishop Fry on Sunday, May 23 at the 5:00 p.m. service.

What’s this class all about? Here are some of the topics we use to spark lively discussions:

*Our Sunday morning worship
Historical contexts of the Bible
Servant ministry
Prayer in daily life*

*Who is Jesus?
Living our faith
Episcopal Church past and present
Building community*





*We welcome all members of St. Michael and All Angels – those new as well as those who have been with us for while – to use this class to explore their spiritual journey and to become more familiar with these topics. Teachers include Fr. Brian Taylor, Fr. Christopher McLaren, Deacon Jan Bales, Vestry members, and members of the Spirituality Guild. This class serves those interested in adult Baptism, Confirmation, reception into the Episcopal Church, or reaffirmation of faith. It is also helpful for anyone who has transferred to our parish and serves as a refresher for those who have not explored these subjects recently. Childcare is provided for all classes if needed. Cost of the materials booklet for the class is \$15.00. A *Book of Common Prayer* may be purchased for \$21.00 for your personal use and study, if needed. Please call the church office (345-8147 ext. 11) or email office@all-angels.com for more information on the class.*

Drink Deeper: For Thirsty Travelers

Sunday Evenings 6:30-8:00 Feb. 21 through May 23rd.

St. Michael's Living Water team and New Members Ministry have teamed up to offer a new opportunity to deepen your spiritual life.

Drink Deeper is for everyone, including those who have been through a New Members class and found themselves wishing that the experience could continue and deepen. **Drink Deeper** will cover a variety of topics: prayer, worship, discernment, Holy Week, the Eucharist, Psalms, Church History and more in an environment oriented toward conversation. Expect quality presentations, engaging conversations, and a deeper experience of community as we **Drink Deeper** from the riches of our own faith tradition. Childcare will be available and snacks will be served. More information contact Fr. Christopher christopherm@all-angels.com or 345-8147 x15. ☺

Thank You from the Liturgical Arts Guild

The Liturgical Arts Guild thanks everyone who helped with the preparations for the Christmas services. We had the largest number of people participating that we have ever had. The sense of community was overwhelming. We've received numerous compliments about the beauty of the church and the glorious feeling during the Christmas season. All of you share in those compliments. ☺

Flowers

The Liturgical Arts Guild has prepared our new flower chart for 2010. If you want to purchase flowers for Sunday services, here is what you do.

1. The chart is in the parish hall. Find the date for which you want to sign up to purchase flowers. Write your name in the space provided.
2. Fill out the card from the supply on the chart. If you want the flowers to be a dedication for “in memory of”, “in honor of” or “in thanksgiving for” someone you love, put that information on the card. Please do not write your dedication request on the chart.
3. Get the card to the parish office by placing it in the collection basket on Sunday, in the black mailbox on the front porch of the office, mail it, or drop it by. Payment can be made at the time you send in the card or, if your date is months away, you can pay later. The usual donation is from \$40-\$50. Please mark your check “for flowers” and also include the date of your donation.
4. Question? Call Kathryn in the office.

Spiritual Companion Groups

**10 weekly sessions, late February through early May
Space is limited; signup deadline February 15**

St. Michael and All Angels is a spiritual community, but how often do we really share and explore our spiritual experience with one another? Where can we ask the big questions of life that often puzzle us? How can we help each other discern the movement of the Spirit in our lives? What might help us learn how to better manifest faith in our relationships, our work, and our everyday life?

For these purposes we offer *Spiritual Companion Groups*. They will provide a safe, confidential, supportive atmosphere where members can share, listen, and support one another as companions on the faith journey.

The groups will last for 10 weeks, spanning the seasons of Lent and Easter. They will consist of 5-7 members, including two facilitators from the Discernment Guild, who have been in training





for this ministry for the last year. *The number of groups are limited, and sign-up is on a first-come-first-served basis.*

The groups will have guidelines and boundaries, with a specific focus for each session that keeps the group centered in the exploration of our how our faith impacts our lives. They will be grounded in prayer.

All conversation in the group will be confidential. People will speak about whatever they freely choose to share with others. They are not therapy groups, and there will not be any advice or interpretation offered to those who share. Those who join groups will be asked to make a commitment to attend all of the sessions.

- **Groups are planned for Sundays 4-6pm, Wednesdays 7-9pm, and Thursdays 7-9pm.**
- **They will begin the week of February 21 and conclude the week of May 2.**
- **\$30 fee for materials; scholarships available upon request.**

To sign up for a Spiritual Companion Group, contact the parish office right away: space is limited. Or for more information, contact Fr. Brian Taylor or Deacon Judith Jenkins. office@all-angels.com 345-8147. ✍

Sunday Morning Adult Classes

Building Healthy Community: Life at the Center
February 7 & 14 Adult Education 10:15-11:00 church nave
Facilitated by Fr. Brian and Fr. Christopher

Many are deeply attracted to the experience of connection and faith found in community. How do we understand community at St. Michael's? What values and shared commitments make a community a place of healing for both individuals and for the surrounding neighborhood? How do we maintain a healthy community that is also an open community? We'll explore these questions and more from a variety of theological angles and challenging perspectives.

Reassembling the Fragments of Love: Living Eucharistically
February 21, 28, March 7, 14, 21
Led by St. Michael's Clergy and Guest presenters.

Explore and deepen your understanding of what we do together on Sunday mornings as a community? How does the Eucharist intend to shape us into the people of God? How does it connect to our daily lives? What does it mean to say we are the Body of Christ? ☞

Mardi Gras Dinner, Dance & Auction



Don your masks and costumes and support our J2A pilgrims as they serve you a fabulous sit-down dinner Saturday evening, February 13th. What better way to celebrate with your Valentine than with dining, dancing, and finding the perfect gift at the auction. Tickets will be on sale each Sunday until the party. Purchase your

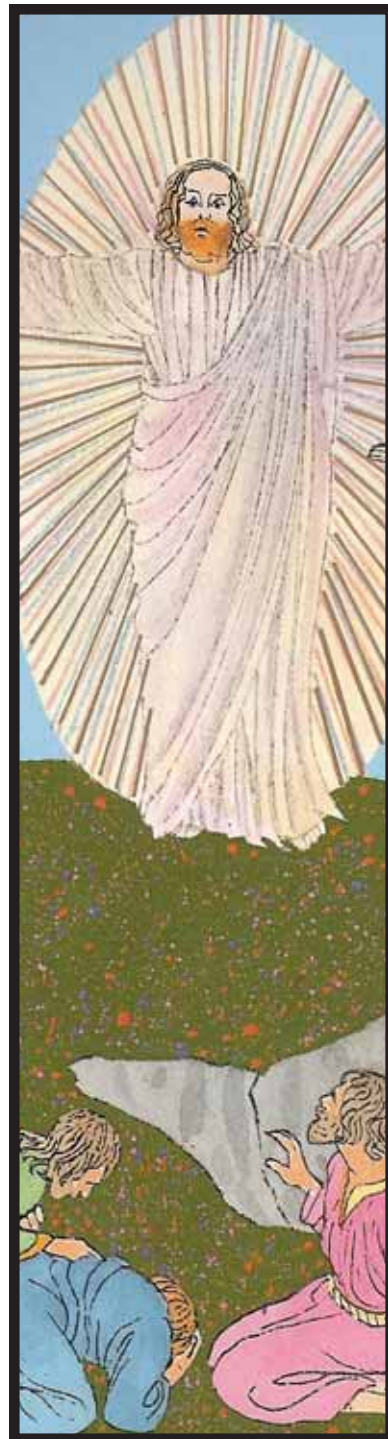
tickets in advance, as they are limited. This party has a reputation for robust fun and festivities!! Ticket prices are \$20 per adult, children 6-12 \$5, children age 5 and younger are free.

We open our doors at 5:30pm. Come early to preview the fabulous auction items. Dinner will feature fabulous Italian fare, and we will dance to snappy tunes from our live band, *Entourage!*

◆ **Mardi Gras Auction Items are at Your House!!**

We need your items to make our auction a success. Uncertain what to donate? Here are some ideas:

- Lightly used but quality items from your home or business, such as home décor, furniture, jewelry, bags or purses, kitchen items or serving pieces, electronics, art, memorabilia of any kind, or Autographed books or photos;
- You probably have a skill or ability that you could donate, such as making and decorating a cake, teaching a skill such as tennis, painting, calligraphy, crocheting, knitting, horse riding, flyfishing, composting, or bike repair;
- You could also offer a service to assist with tax returns, writing a will, helping plan a garden, painting a room, clean-up for a yard, or hauling a load of trash to the dump.;
- Could you host people for a special dinner? Give a tour of somewhere interesting, such as a brew pub or a Crime Lab;





- ♦ Do you create art that you could donate: an icon, a painting, jewelry, wood carving, furniture making, needle crafts?

This auction will be a great way to promote a business. You or a friend could donate a certificate for a business service such as massage, manicure, haircut, yoga, photography, or an event such as tickets for Theatre, Concerts, Shows, Sports event, Dining Certificates, Catering, timeshare slot, Hotel stays, Plane tickets, Travel package, a ride in a special car. Do you know a celebrity? Would they be willing to have dinner with a winning bidder?

If you know a business that might donate an item or service if asked by our J2A youth, please contact Margaret Keener (269 – 1262 / h 797 - 4272) or Linda McCreary (450 – 5716) with the name.

We will accept items up to the day before the auction.
Thank you! ☺

All Angels Day School

All Angels? A preschool here at the parish? Who comes to school here? What grades do they encompass? Do they pay rent? Do they need anything? How do we get information? I can't believe I didn't know there was a school here!

You would be amazed how often I hear those comments, questions or concerns. All Angels Episcopal Day School is alive and well here at the Parish. We were founded as a developmentally appropriate, high –quality early childhood program in 1988, by three women, one of whom was a parishioner. We are an outreach ministry of the parish, serving not only members of this parish and other local Episcopal parishes at this time, but also families from Rio Rancho, Bernalillo, Santa Fe and Albuquerque! We have 44 children on-site each day, with approximately 70 enrolled overall, due to two, three and five day scheduling options. We serve only preschoolers, ages two through five years of age. We do pay 5% of our earned revenue to the Parish to offset the effect of the school on monthly utilities, liability insurance and daily wear and tear. We reserve 3.5% of our earned revenue for scholarship assistance to families who request it. (In 2009, we awarded over \$9400 in scholarship assistance.) We pay all our general operating costs, including payroll for 17 faculty members and an evening janitor. We also pay all repairs directly related to the day school and offer assistance as we can for renovations, repairs and

upgrades to the current facility. We include over \$12,500 of fundraising revenue in our annual budget, so we are always grateful for your help with the bakes sales, rummage sales and Silent Auctions. (There is a rummage sale scheduled for April 24, 2010, so save your useable discards and we will be glad to accept them as soon as we have a place to store them.)

We are nationally accredited through NECPA (National Early Childhood Program Accreditation). Our accreditation, earned in 2008 will expire on February 28, 2011, so 2010 will be spent redoing the accreditation process. This process involves an in-depth self-study, a verification visit once the self-study is completed and then all the materials are sent to a multi-member, multi-state commission for the actual decision concerning accreditation. It is a very involved and educating process. We hold a five-star license from the State of New Mexico, because of our national accreditation.

Being a developmentally appropriate early childhood center, we facilitate an environment that allows the children to learn through play and by doing. For example, while the children are guessing what the number 11 looks like or what the next shape of the pattern on the calendar will be, they are learning math. As they mix the ingredients together for banana muffins, they are learning math and science. While they are painting a backdrop for a mural with their friends, they are learning to communicate and share. Play is the work of young children and we feel they should be allowed as much time as possible to do their work.

How can you help? Licensing and security regulations make it hard to have a lot of people in the classrooms all the time, but if you are interested, call the school office. We need the sheets of paper that are blank on one side that are used to hold coupons and flyers in the daily papers. You can drop these inserts off any time you are on campus either in the kitchen or in the parish hall. We'll find them. We also would not be successful in our fundraising efforts without your help, so please continue. We also need your prayers. Working with young children is incredibly rewarding, yet demanding. Some of our children and their families are dealing with special needs, long-term illnesses, financial stressors and more. Each and every member of the All Angels community would appreciate being remembered in your prayers.

We will begin enrolling new students for the 2010 summer program and the 2010 – 2011 school year from the parish and the






waiting list the first week of March. If you would like more information about All Angels, please call the school office at 344-5888.

~ Nancy Nerderman, Director

New Mexico School of Sacred Arts

Beginning Icon Painting class - Saint Michael the Archangel
Traditional Russian method with egg-tempera and gold-leaf on wooden panel. Begins Saturday, February 27th at San Gabriel Episcopal Church in Corrales.

Class meets the last Saturday of every month, February thru September; 9am-4pm. Fee is \$400.00. Non-refundable deposit is \$100.00. All materials are provided. (from boards through varnishing)

Class is limited to 15. All students are welcome. Beginners thru advanced. Registration opens January 17th - call Karly Shepherd 771-8995. 

New Books in the Library February 2010

Thomas J. Steele's *Archbishop Lamy : In His Own Words* (call number 252.02 Lam 2000) sheds some new light on the John Baptiste Lamy, the first Catholic bishop and Archbishop of Santa Fe and the subject of Willa Cather's novel *Death Comes to the Archbishop*. Bishop Lamy was neither Anglo nor Hispanic, but was a Frenchman. Steele believes that Lamy's sermons, newly translated by Steele, reflect the authoritarian influence of French Catholicism, as well as the Bishop's strong moralistic approach to religion. A valuable resource for New Mexico history buffs.

Nicholas Wade, *The Faith Instinct: How Religion Evolved & Why It Endures* (call number 201 Wad 2009) attempts to explain how religion helps to create social bonds between unrelated human beings. The author has some powerful descriptions of the role of religion-based music, dance and trances in contemporary hunting and gathering populations. Wade's attempts to probe the social effects of

religion in Judaism, Christianity and Islam are less persuasive. A good contribution to the growing literature on the biological background of human religions, including Christianity. ~

Food Pantry, Casa San Miguel

Your support helped the food pantry to give out 240 turkeys, 250 hams, 60 weatherization kits and 250 stockings during the holidays. Thank you! We continue to offer support to these families after the holidays and appreciate your continued donations of food, toiletries and clothing. We also continue to accept children's books to promote literacy in our community. Thank you for your support of this much needed ministry. ~



The Ministry of Reconciliation: An Introductory Course on Conflict Resolution

The Ecumenical Institute for Ministry (EIM) is offering this 12-hour course to provide clergy and lay leaders with basic tools for resolving conflicts in the parish/congregation. The class will meet at Immanuel Presbyterian church, 114 Carlisle Blvd. SE, Abq. from 5:30-8:30 p.m. on the following dates: February 9, 11, 16 & 19. Rev. Dr. Wallace Ford and Cynthia Olson will help students examine the dynamics of conflict, learn about interpersonal conflict as well as the stages of church conflict, and practice basic mediation skills. To register for this course, please contact Meg Ashcroft, EIM Program Coordinator, at MAshcroft@norbertinecommunity.org or 505-873-4399. The cost for the course is \$75.00. Please register by Monday, February 1, 2010. ~





Financial Report

The Financial news for period ending December 2009 is reported below. In December we realized a net gain \$2,683. Thank you to everyone who gave so much during this blessed season. Although we ended the year with a significant loss, much of this loss is due to not counting pre-paid 2010 pledges in the current year, which has been done in recent years past.

As we end what has been a financially trying year, we begin a new year with great hope and optimism. Our 2010 annual pledge campaign has been very successful. We are currently contacting those who have not yet pledged and urge you to do so. As we begin this New Year, we again give thanks for our membership and pray for a more stable economy in 2010.

Income

	December 2009	Year to Date
Income	\$77,979	\$ 645,025
Expenses	\$75,296	\$ 697,372
Net	\$2,683	\$ (52,347)

Pledges

	December 2009	Year to Date
actual	\$ 64,606	\$ 565,634
budgeted	\$ 48,417	\$ 581,000
variance	\$ 16,189	\$ (15,366)

New Building Project

Beginning Balance	Current Month Receipts	Current Month Expenses	Ending Balance
11/30/2009	12/31/09	12/31/09	
\$288,530	\$128,349	\$4,222	\$ 412,657

Winter Sanctuary: An Invitation into Stillness

A one-day retreat on Saturday, February 6th, 2:00-8:00 p.m., at Bosque School. Led by Oleta Saunders, Sheryl Chard, and Sarah DeRosear

Please join us for an afternoon and evening of reflection as we journey into the quiet of winter. We will honor the stillness of the season and encourage stillness in ourselves through poetry, prayer, and journaling. The retreat will include a ceremonial walk through the bosque, accompanied by music and sacred readings. Our evening will close by breaking bread together with a shared, light dinner.

Registration is limited to 40 participants. A fee of \$30 to cover food and journal materials is due in the church office by February 1st. For scholarship support, please contact Fr. Christopher. ☞

Bishop Nominees

The Standing Committee of the Episcopal Diocese of the Rio Grande is pleased to announce five nominees for the 9th Bishop of the Diocese. For more information on these nominees, visit the Diocesan website at www.dioceserg.org/bishop_search.php.

In alphabetical order the nominees are:

- ✦ The Reverend Ellis Tucker Bowerfind, Rector
St. Luke's Episcopal Church, Alexandria, Virginia
- ✦ The Reverend James R. Harlan, Rector
Church of the Ascension, Denver, Colorado
- ✦ The Reverend Jedediah D. Holdorph II, Rector
St. Mark's Episcopal Church, Medford, Oregon
- ✦ The Reverend John S. Nieman, Rector
Holy Trinity Parish, Clemson, South Carolina
- ✦ The Reverend Dr. Michael Louis Vono, Rector
St. Paul's Within the Walls, Rome, Italy



St. Michael's on Facebook

We now have our very own facebook page! There are many possibilities for the community to use this as a tool to connect with each other. Visit it and paste your favorite St. Michael's photo, start a new discussion, post a house for rent! If you have never used Facebook, now is a great time to give it a try. Just go to www.facebook.com and follow the instructions. ☺

Meditations

Carnival and Mardi Gras

*There is nothing better for mortals than to eat and drink and find enjoyment, for these are from the hand of God.
Ecclesiastes 2:24*

*So carry we the winter out
Far from our fields and farms and flocks
To throw his body in a grave
And pile it high with stones and rocks.*

*So will we bury all that's dead
Until the day when time will end,
And death will die and Christ will come.
Lord, to us folks glad summer send.*

~ German carol 17th Century

After the carnival feasting, after the last games and the dances, we sing our final Alleluia and we sing it in rounds. Then we bury it in a deep chest. The Alleluia that we bury is first lettered on a long scroll and decorated with spring flowers by all the participants. We will not hear or use this expression of greatest joy until it is sung again during the Easter night. Then we settle down. We remove some of our silliness and gather for community night prayer. Drawing



the revelry to a close, we face tomorrow's Ash Wednesday. We offer one another a sign of peace and best wishes for a holy and fruitful Lent. With that, we begin a great silence. Everything is cleaned up, and everybody moves about collecting belongings, but no one speaks a word.

Tonight I have danced with a bagman. Tonight I have danced with a general. I have danced with clowns and cowboys. I have danced with the president and an elephant. I have danced with a cheerleader, with Apollo, Dionysus. Tonight I have danced with God.

~ Gertrud Mueller Nelson, To Dance with God

Ash Wednesday

What are we but a mass of thawing clay? Henry Davide Thoreau

Remember, human, that you are dust, and to dust you will return. Genesis 3:19

The cross, with which the ashes are traced upon us, is the sign of Christ's victory over death. The words "Remember that thou art dust and that to dust thou shall return" are not to be taken as the quasi-form of a kind of "sacrament of death" (as if such a think were possible). It might be good stoicism to receive a mere reminder of our condemnation to die, but it is not Christianity.

~ Thomas Merton



**ST. MICHAEL'S
STAFF**

RECTOR

FATHER BRIAN TAYLOR
BrianT@all-angels.com

ASSOCIATE RECTOR

FATHER CHRISTOPHER McLAREN
ChristopherM@all-angels.com

SOCIAL JUSTICE ASST

Deacon Jan Bales
JaniceB@all-angels.com

BUSINESS ADMINISTRATOR

KATE BRADSHAW
KATE@ALL-ANGELS.COM

PARISH ADMINISTRATOR

Kathryn Ravenwood
Kathryn@all-angels.com

COMMUNICATIONS SPECIALST

JULIE PADILLA
Communications@all-
angels.com

DAY SCHOOL DIRECTOR

Nancy Nerderman
school@all-angels.com

FORMATION ASST

Billie Helean
Billie@all-angels.com

SEXTON

Randy Sommer

11:15AM CHOIR DIRECTOR

Darby Fegan

9:00AM MUSIC DIRECTOR

Ken Gilman
Gilmanka@earthlink.net

ANGELUS EDITOR

Angelus@all-angels.com
*Deadline for submissions
3rd Sunday at noon*

601 Montano Rd. NW
Albuquerque, NM 87107
Return service requested

Non-Profit Org.
U.S. Postage
PAID
Albuquerque, NM
Permit No. 991

S t. Michael & A l l A ngels E piscopal Church

601 Montano Rd NW ABQ, NM 87107
Phone: 505/345-8147 Fax: 343-9042
office@all-angels.com

Visit our website at: www.all-angels.com



Eucharist: Sunday 7:30am, 9:00am & 11:15am
Thursday 9:30am